

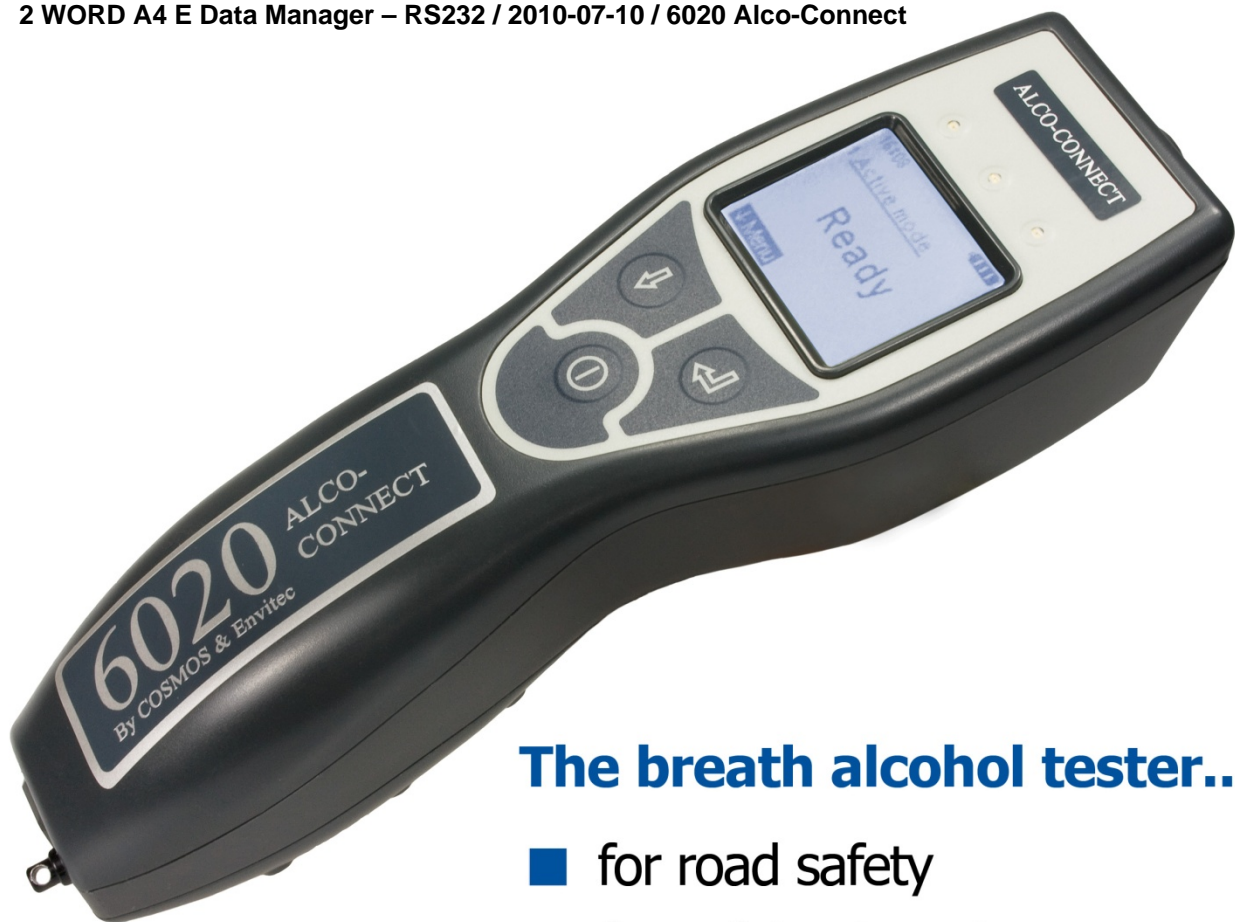
COSMOS ALCOHOLTESTER

Alco-Connect[®]



Data Manager (RS232-Version)

2 WORD A4 E Data Manager – RS232 / 2010-07-10 / 6020 Alco-Connect



The breath alcohol tester...

- for road safety
- for safety at work
- in medicine



Cosmos-Alkoholtester GmbH

Am Ihlsee 18 · D-23795 Bad Segeberg
cosmos@alcoholtester.de · www.cosmos-alcoholtester.de

Tel.: +49-(0)-4551-83838 · Fax: +49-(0)-4551-87171



Welcome.....	4
<i>What is the Cosmos PC software?</i>	<i>4</i>
<i>What is the purpose of the PC software?</i>	<i>4</i>
<i>Can I not do all this without special software?</i>	<i>4</i>
<i>How can I install the software?</i>	<i>4</i>
<i>First steps: Connecting the device to the PC.....</i>	<i>5</i>
Tools	5
Procedure	5
Notes	8
Processing measurements.....	8
<i>Overview.....</i>	<i>8</i>
Procedure	8
Notes	9
<i>Reading records in groups.....</i>	<i>9</i>
Tools	9
Procedure	9
<i>Editing records</i>	<i>9</i>
Tools	9
Procedure	9
Notes	10
<i>Saving records</i>	<i>10</i>
Tools	10
Overview	10
Procedure	10
<i>Reading measurements from a file.....</i>	<i>11</i>
Tools	11
Overview	11
Procedure	11
Notes	11
<i>Statistical evaluation of the data</i>	<i>12</i>
Tools	12
Overview	12
Procedure	12
Settings	13
<i>Adjustment of COM port.....</i>	<i>13</i>
Tools	13
Procedure	13
Notes	13
<i>Adjustment of software interface language.....</i>	<i>13</i>
Tools	13
Procedure	13
<i>Defining column headings</i>	<i>14</i>
Tools	14
Procedure	14
<i>Definition of limit values for statistics</i>	<i>14</i>
Tools	14
Procedure	14

6020 Alco-Connect[®] Data Manager



Notes.....	14
Guarantee	14

These instructions have been compiled with the greatest of care. If, however, you should find details which conflict with the system while you are using it, we ask that you inform us briefly, so that we can remedy any inconsistencies as quickly as possible. We reserve the right to make changes to the information and illustrations contained in these operating instructions, owing to further visual and technical developments. All trademarks mentioned and illustrated in the text are trademarks of the particular owners and are recognised as protected.

Printing, translating and copying the operating instructions, in any form whatsoever, including excerpts, require the manufacturer's written consent.



Welcome

What is the Cosmos PC software?

The Alco-Connect[®] PC software is a Maintenance for breath alcohol devices of the Alco-Connect[®] 6020 series.

What is the purpose of the PC software?

The PC software allows you to carry out a number of maintenance functions that are not available on your breath alcohol device. The following tasks can be completed with the PC software:

- Further processing (archiving, printing, etc.) the measurements saved in the device

Can I not do all this without special software?

Some of the above tasks can also be completed without the need for the PC software. These include:

- Adjustment of time
- Adjustment of unit
- Adjustment of device language
- Display of measurements

How can I install the software?

After you have inserted the supplied CD in the drive of your computer, the data manager installation program starts automatically.

Then follow the instructions for the installation program.

First steps: Connecting the device to the PC

Tools

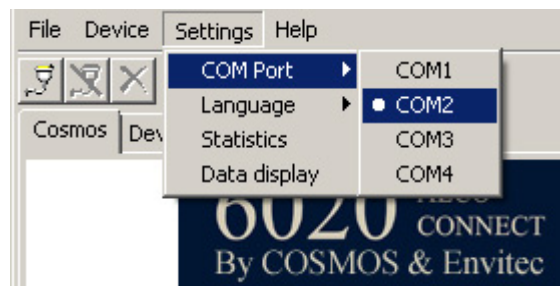
Click the „Connect Device“ button in the left corner of the PC software toolbar (plug icon). Alternatively, select “Connect” from the “Device” menu.

Procedure

Step 1

Connect the Alco-Connect device to the PC, using the supplied cable. Connect the cable to one of the COM Ports of your PC. Alternatively, you can use a COM adapter connected to the USB port.

After the USB adapter software has been installed, it must still be tested. According to the software, only the following communication ports must be used:

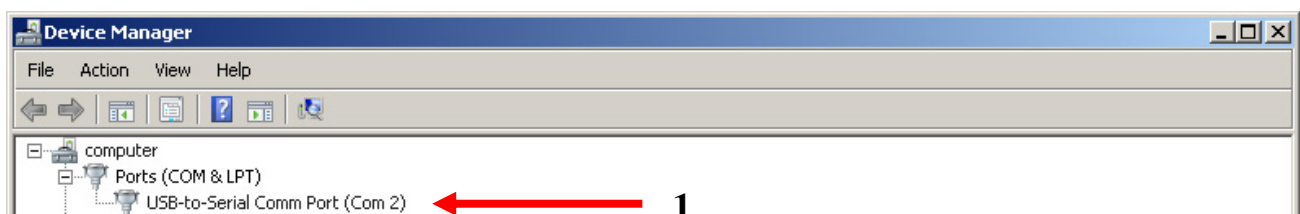


Step 2

On your PC, use the following to navigate
Start => Settings => System Controls => System

In the System Properties window, navigate to the Hardware tab and now click the button "**Device Manager**".

The following window appears:



Please check whether the "**USB Serial Port**" is on COM2, COM3 or COM4. If this is the case, you may close the window.

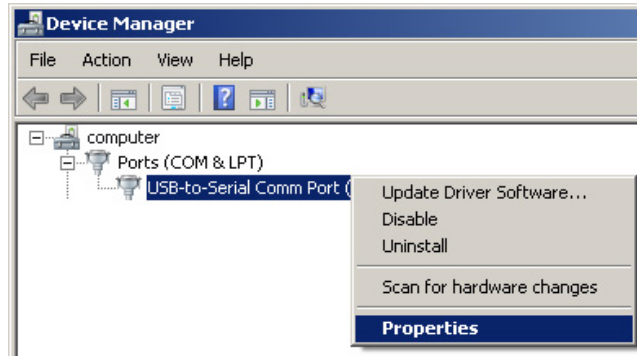
If the "**USB Serial Port**" is not at the above-named COM ports, it must be changed, as shown in Step 2.

6020 Alco-Connect[®] Data Manager

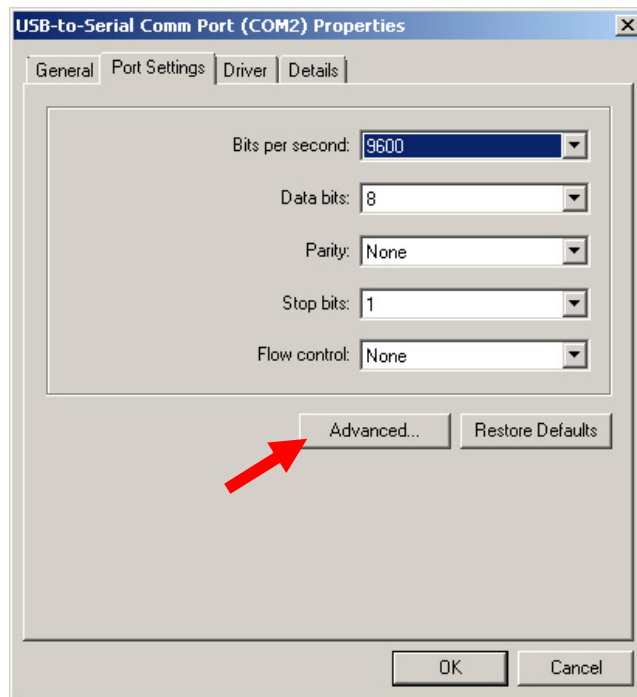


Step 3 setting

With the right mouse-button, click on **"USB Serial Port"** and then on **"Properties"**.

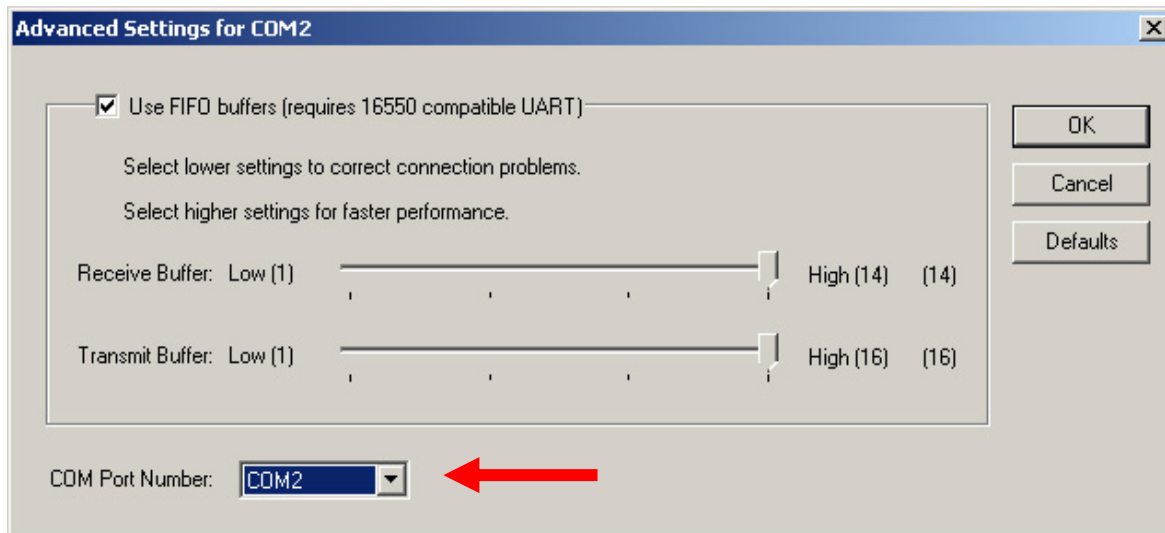



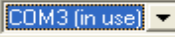
In **"USB Serial Port Adapter Properties"**, click **"Port Settings"** or **"Settings"**.



Now click **"Advanced"** or **"Expanded"**.

The following window appears:



By clicking on  a free COM Port can be selected and changed. Please set this COM Port to an *empty* COM port. COM1 und COM3 are mainly blocked by the PC (e.g., ). These COM Ports cannot be used! This setting is saved by clicking "OK" and it is possible to continue working with the device software.

Step 4

If you have not already done so, start the PC software. The dialog „Connect“ appears. Confirm by clicking „OK“.



Step 5

Switch on the Alco-Connect device. After approximately 3 seconds, the message „Device connected“ is displayed in the status bar of the PC software. The display fields of the “Device Data” show the relevant data. The device is connected to the PC. The message “PC Online” should now appear on the display of the Alco-Connect device.

Notes

If this is the first time you establish a connection between the PC and the device, please ensure that the COM port number displayed in the "Settings" menu corresponds to the COM port to which you have connected the device.

To do this, terminate the connection process that takes place after the PC software is started by clicking "Cancel" when asked whether you wish to establish a connection. After you have made sure that the COM port settings are correct, restart the connecting process by clicking the "Connect" button. Proceed with step 4.

Processing measurements

Overview

AlcoQuant devices store all completed breath alcohol measurements in an internal memory. This information can be retrieved with the PC software for further processing and storage.

Each record consists of the following fields:

- Record number
- Date
- Time
- Measurement

With the PC software, you can

- Reading all measurements
- Reading records in groups
- Editing records
- Saving records
- Statistical evaluation of the data
- Reading measurements from a file

You also have the option to make a number of settings that facilitate the work with the measurement:

- Definition of editable columns in the measurement table
- Definition of limit values for the statistical evaluation

Reading all measurements

Tools

After having established a connection to the device, click the "Data Memory" tab. At the bottom of the table, you find the "Read All Data" button.

Procedure

Click the button. You are asked to confirm that you wish to retrieve all records currently stored in the device. To do that click "OK". All records are now read. The green bar below the table indicates the progress.



Notes

Depending on the number of records, the reading of the data might take some time (up to 1 minute for 250 records).

Reading records in groups

Tools

After having established a connection to the device, click the “Data Memory” tab. At the bottom of the table, you find the “Read data memory” button.

Procedure

Click the "Read data memory" button. 20 measurement records are read and displayed in the table. The record of the last measurement is shown at the top of the table. The button at the bottom of the table has changed to "Read Next 20 Records". Click the button to read the next 20 records from the device. After all records have been read, the button is disabled.

Editing records

Tools

After having established a connection to the device, click the "Data Memory" button. A table is displayed, showing the measurements.

Procedure

Loading measurements

The measurements you edit are retrieved directly from the device or from a file. If you wish to edit measurements from the device, you must first read the data into the table. You have thereby the option to read all records, or to read records in groups.

Editing

The last five columns of the table can be edited. You have the option to add there your own comments for each record. To do this, click a field and press function key F2; alternatively, double-click the field. You can enter any text in these fields.

Saving

At the bottom of the table, you find the „Save Data“ button. For more information on how to save device data, please refer to the respective topic.

Notes

The entries made manually in the last 5 columns can only be stored in an external file and not in the device! You also have the option to enter suitable headings for the editable columns in the table. For more information on how to enter headings, refer to topic Definition of editable columns in the measurement table.

Saving records

Tools

After having established a connection to the device , click the "Data Memory" button. At the bottom of the table of records, you find the "Save Data" button.

Overview

The data you might wish to save is retrieved directly from the device or from a file. The process of saving data differs slightly, depending on the source of the data. If no data has been read into the table, the "Save Data" button is disabled.

Procedure

Saving data from a file

When the button is clicked, the records and all changes made to them are saved in the file from where they were retrieved

Saving data from an device

When the button is clicked, a dialog is displayed in wich you can select the target directory and file name. Confirm you entries with "OK". The content of the table, including all changes made, is now saved in the specified file.



Reading measurements from a file

Tools

To read records from a file, you do not need to connect the device to the PC. Select the “Read Records” option in the “File” menu.

Overview

Data read from an device can be stored in a text file. Such text files can then be opened with the PC software for further processing.

Procedure

Step 1

If the device is connected to the PC when you click the above option, the program confirms that with the message "Connection established. Continue?". Confirm with "OK" to disconnect the existing connection. The above step can of course be skipped, if the device is not connected to the PC.

Stept 2

By clicking the menu option, a dialog is displayed where you can select the file you wish to view. After confirmation with "OK", the records are shown in the table on the "Data Memory" tab. You can now edit and save the displayed data.

Notes

While a text file is open, there is no connection to the device. Existing connections are thus automatically disconnected as soon as the user switches to file mode.

While the text file is open, all functions that are used in connection with an device are disabled so that only the "Data Memory" tab is visible in file mode.

Statistical evaluation of the data

Tools

The "Statistics" button is located in the right corner of the PC software toolbar. This function is related to the Definition of limit values for the statistical evaluation function that is accessible through the "Statistics" option in the "Settings" menu.

Overview

With the PC software, you can group the measurements made with the device in four categories, based on the measured alcohol value. You have thereby the option to specify the limit values defining the categories. For more information on this topic, refer to Definition of limit values for the statistical evaluation.

Procedure

Step 1

The button is only enabled, if measurements have been read from the connected device. In order to view a statistical analysis, first read in all or some measurements from the device. Statistical evaluations can also be generated based on measurements stored in files. In this case, read in a file with measurements.

Step 2

As soon as data is displayed in the table on the "Data Memory" tab, the "Statistics" button is enabled. After clicking it, a dialog window with the statistical evaluation is displayed.

Settings

Agjustment of COM port

Tools

Select the „COM PORT“ option in the „Settings“ menu to select the COM port to wich the device is connected.

Procedure

Select the desired Com port in the "COM Port" menu. The currently used port is marked with a black dot. As soon as a different port is selected, a message is displayed, indicating that the new settings will be applied the next time the device is connected. Confirm the message by clicking "OK".

Notes

You can only select a different COM port if no device is connected to it.

The following errors might occur, if an incorrect COM port is set:

- No connection can be established between the PC and the device. Click the "Connect Device" button again to interrupt the establishment of the connection. Change COM port.
- f you have chosen a COM port that does not exist in your PC, a system error message is displayed. Change COM port.

Adjustment of software interface language

Tools

Select the „Languages“ option in the „Settings“ menu to select the desired software interface language.

Procedure

Select the desired language in the "Language" menu. The currently used language is marked with a black dot. As soon as a different language is selected, all texts of the program interface are displayed in that language.



Defining column headings

Tools

To access the dialog in which you can edit the column headings, choose the "Settings" menu and then select the "Data Display" option.

Procedure

The dialog contains five input fields. By default, the fields contain the column headings "Column1" to "Column5". Enter the column headings you wish to use. Confirm your entries by clicking "OK".

Definition of limit values for statistics

Tools

To enter the limit value, you do not need to connect the device to the PC. In the "Settings" menu, select the "Statistics" option.

Procedure

In the following dialog, you can enter 3 limit values with decimals. Confirm your entries by clicking "OK". The new limit values are now saved.

Notes

If no device is connected, enter the limit values in %.

Guarantee

From the date of purchase, Cosmos gives two years' guarantee against faults that are attributable to material or manufacturing faults. Faults which come under the guarantee are remedied under our conditions of guarantee. Cosmos does not entertain claims under the guarantee, if the customer jeopardises the proper functioning of the device by failure to heed the operating instructions, unskilled handling, unauthorised use or outside intervention. In such cases, liability is transferred to the owner!

The guarantee is voided in the case of chemical effects from expired batteries or use of the batteries after the expiry date. Forward and return transport, in the case of a repair which does not come under the guarantee, is charged to the customer. Please send devices for repair, with all accessories, to the following address:

**Cosmos-Alkoholtester GmbH
Am Ihlsee 18
D-23795 Bad Segeberg**

Claims under the guarantee can be met only in conjunction with proof of purchase!